

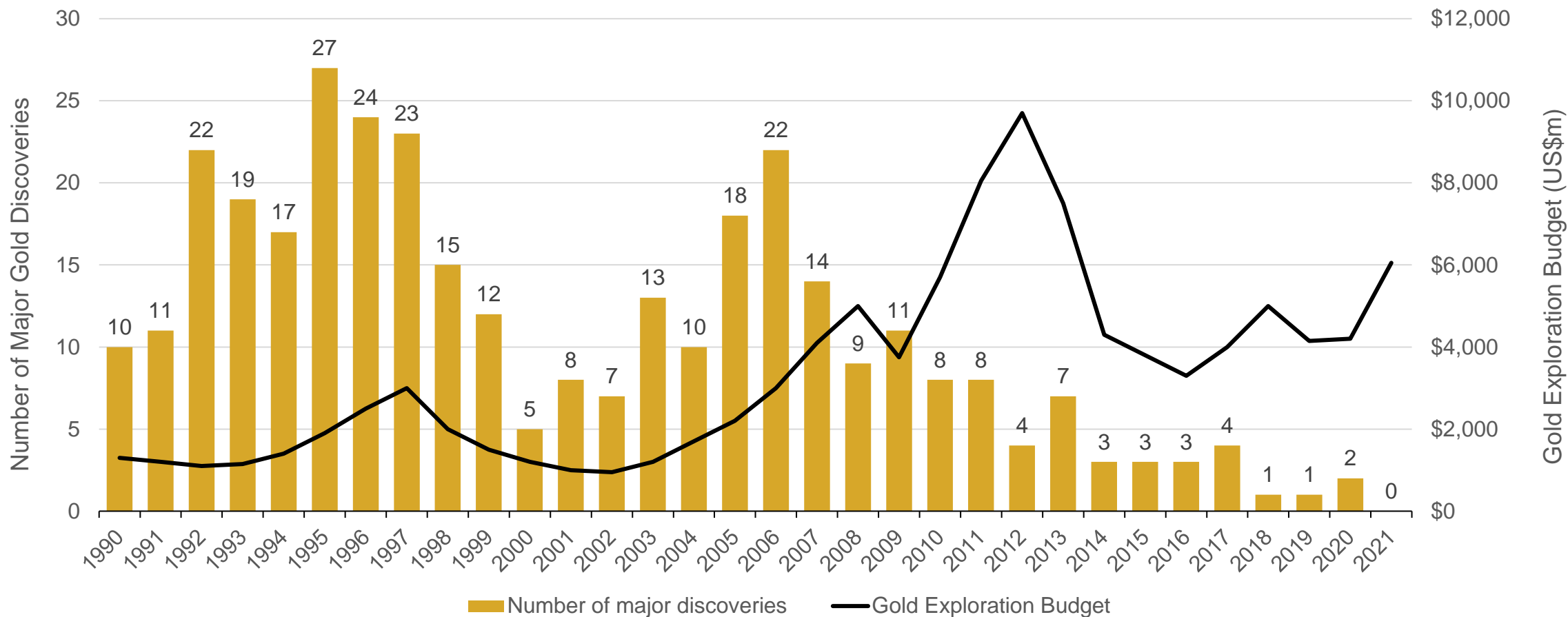


“Field-based XRP for prompt Au results” – so much more than rapid gold results, anywhere!

20 August 2024

Simon Bolster, Co-Founder and MD

The Global Gold Industry has a Significant Challenge



180 major discoveries in 1990's

117 major discoveries in 2000's

42 major discoveries in 2010's

Major discovery = >2 Moz gold, or where >20% of the metal in the deposit exceeds this threshold.

Source: Barrick Gold, SEG London, Aug 2023



The problems we are addressing:

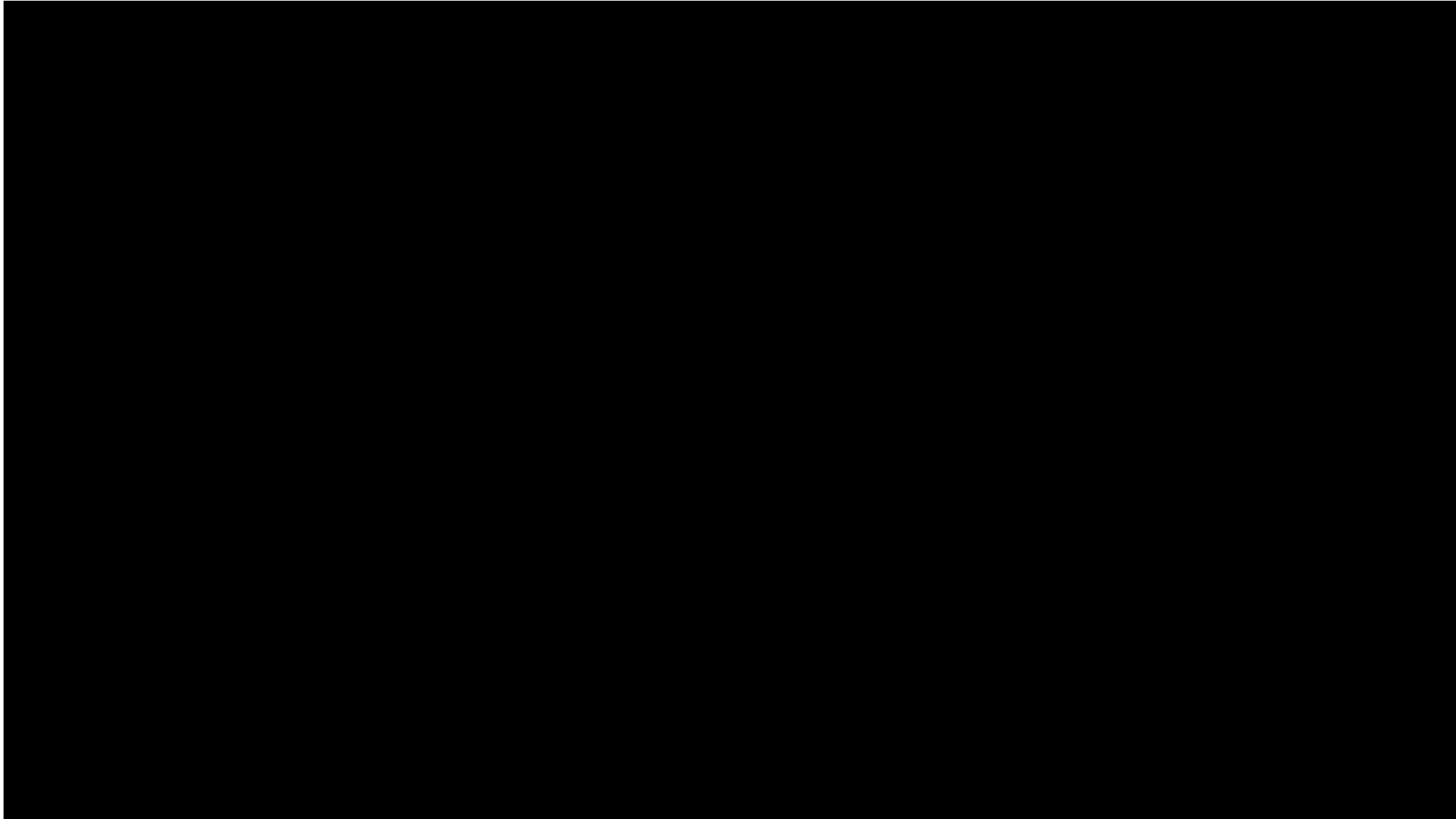
- ✓ Gold discoveries are less frequent and taking longer to make
- ✓ Quality discoveries are taking even longer
- ✓ Mining Costs are increasing
- ✓ All costs are increasing and recruitment into remote locations becoming harder
- ✓ Investors reward greener outcomes
- ✓ Investors want faster results
- ✓ Investors want lower risk
- ✓ ESG relevant to all stakeholders

Building mines is risky:

20% “mega [mining] projects” completed between 2008-2018 suffered significant cost and schedule overruns.

- Out of 41 projects surveyed with Capex > \$500+ million
 - 19% suffered >100% budget overrun
 - av. 29 months delay
 - 44% suffered 15-100% budget overrun
 - av. 7.5 months delay
 - 17% within budget (<15% of capex budget)
 - **Only 20% suffered no cost or time overruns**

<https://im-mining.com/2019/03/06/mckinsey-presents-mega-project-blowouts-avoid-pdac/>



MRIWA Project M543 – fundamental science



REPORT NO. 543

Field-based XRF for prompt Au analysis

Results of research carried out as MRIWA Project M0543

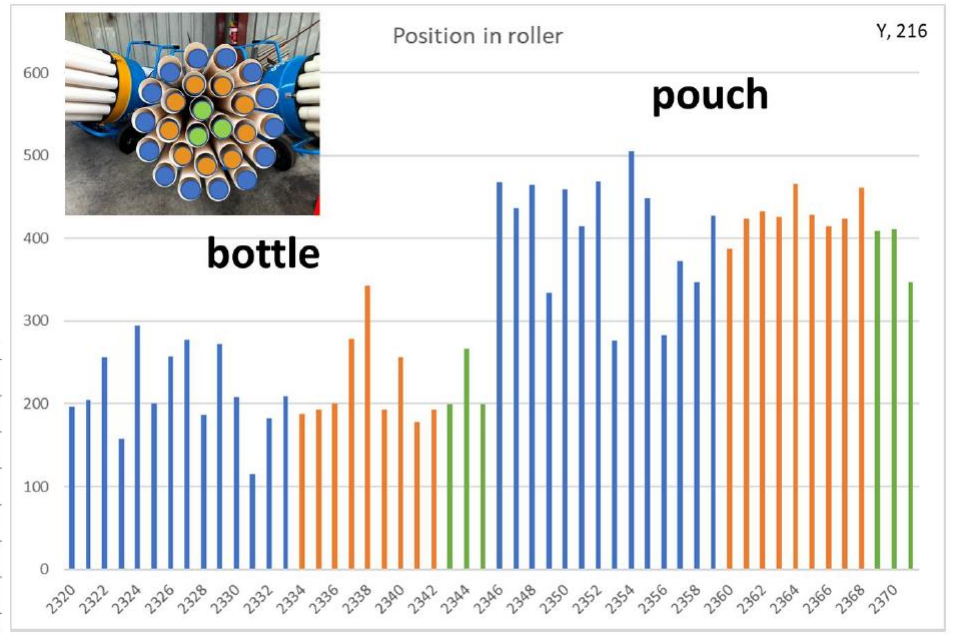
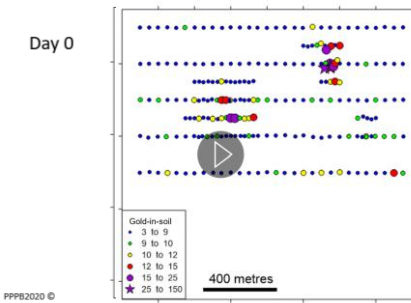
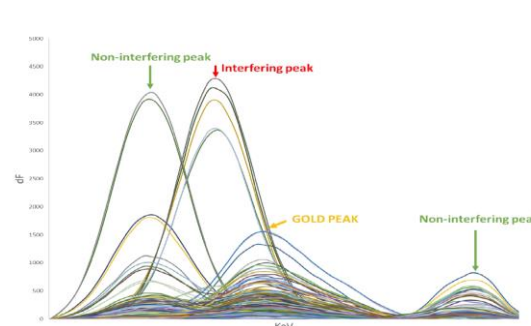
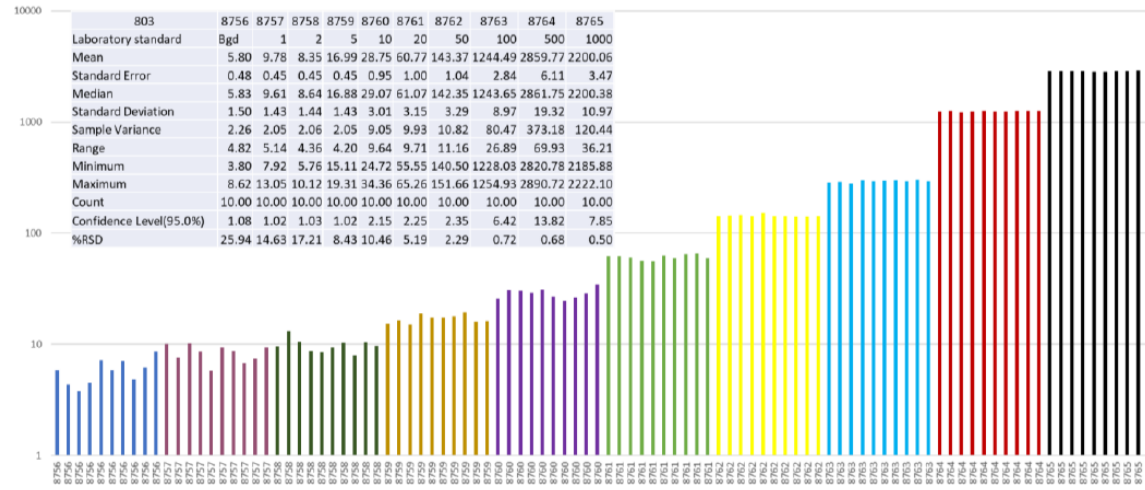
Portable PPB Pty Ltd

by
Dr Melvyn Lintern and Mr Simon Bolster

April 2022

Distributed by: MRIWA
Mineral House
100 Plain Street
Perth WA 6000
to which all enquiries should be addressed

© Crown Copyright reserved



detectORE™ Applications Throughout the Gold Industry



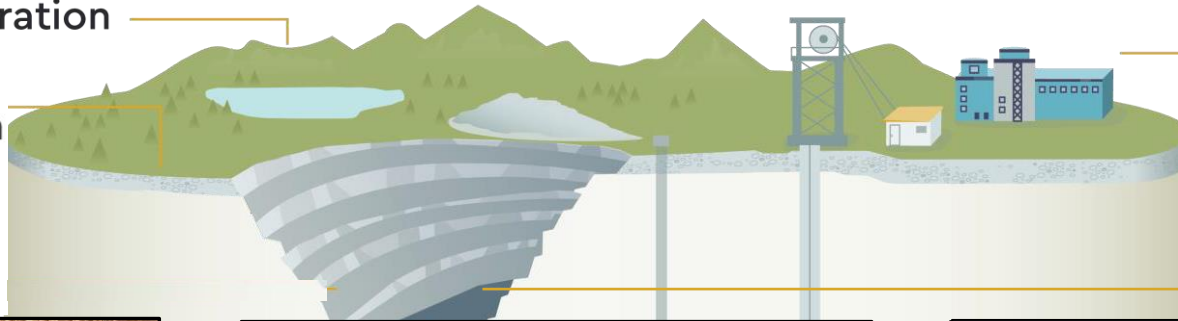
Greenfields Exploration



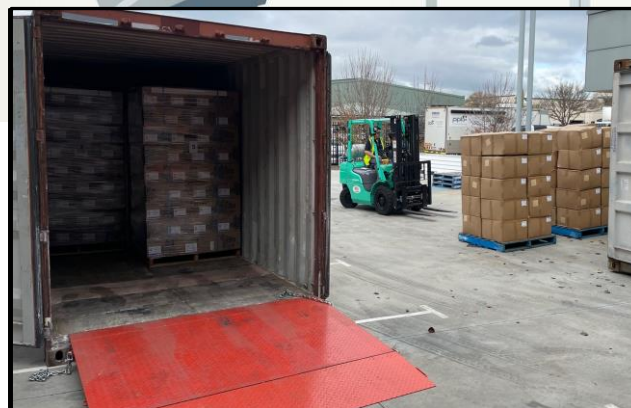
Process Plant Monitoring

Brownfields Exploration

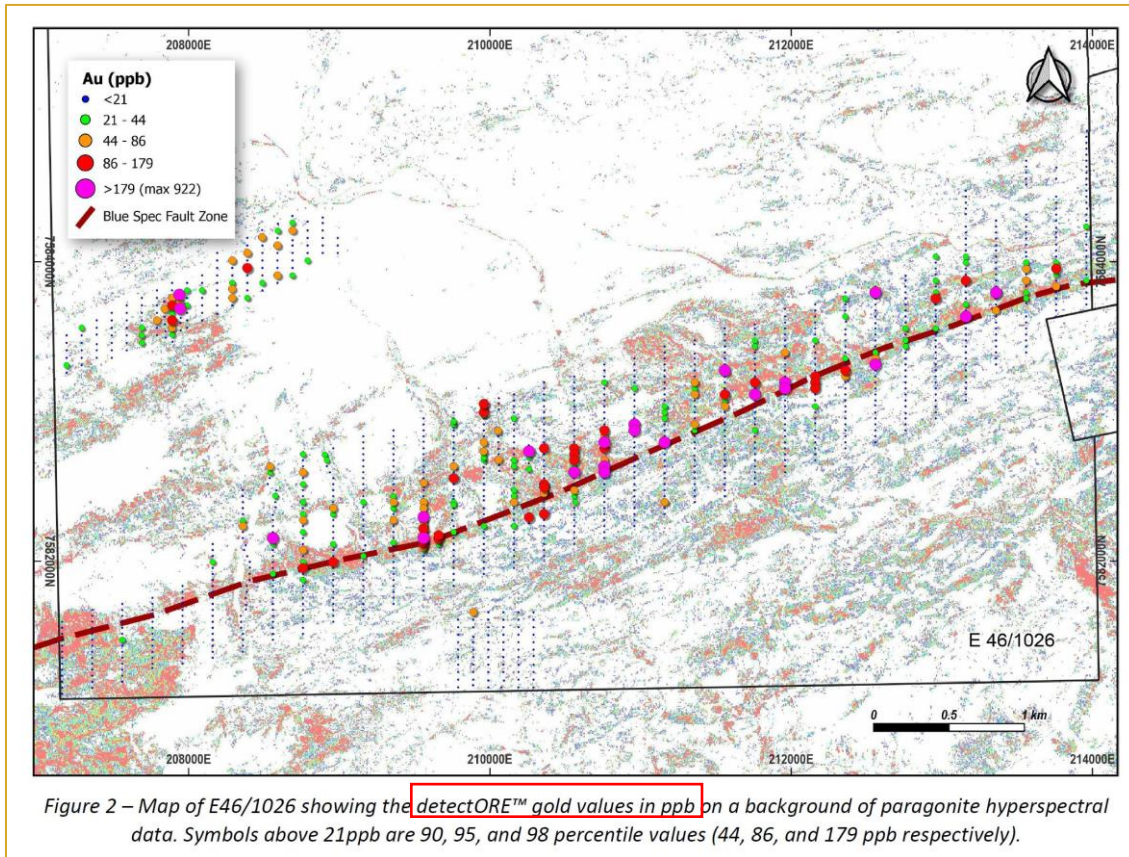
- ⊕ Drill samples
- ⊕ Soils



Grade Control Drilling



WA Gold Discovery - 1st anywhere. Saved > 8 months



From Calidus ASX Release 2/8/2022

“The soil samples were analysed by Calidus field personnel for Au using the novel detectORE™ method developed by Portable PPB within 48 hours of the samples being collected. This has allowed the entire timeframe from sampling to approvals granted to be compressed so that drilling could be carried out before the end of the field season in the Pilbara.” From Calidus ASX Release 28/11/2022

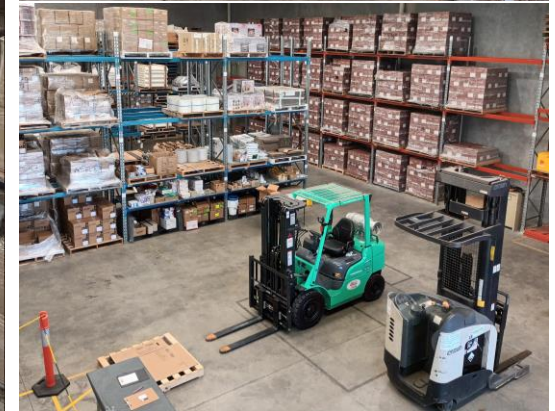
detectORE™	Months (Actual timelines)	Lab samples
Soil sampling & on-site detectORE assays <ul style="list-style-type: none"> 2 phases completed Anomalies field checked 	Mid-June 2022	Soil sampling - 1 Phase only <ul style="list-style-type: none"> Duplicate samples shipped to lab
	July	
ASX release (Aug 2) <ul style="list-style-type: none"> Capital raise completed Heritage clearance Drill rig booked 	Aug	Check samples at lab... Note: no check lab assays available when drilling commenced
	Sept	
Drilling starts <ul style="list-style-type: none"> “Rush” lab results where gold identified 	Oct	
Discovery confirmed ASX announcement Drilling on-going	Nov 2022	No heritage clearances undertaken 1 st Nov to April. <ul style="list-style-type: none"> Traditional Owners require min 1 month notice.
		Drilling would not have started until June / July 2023

Humble Beginnings to Growth Business in <6 years

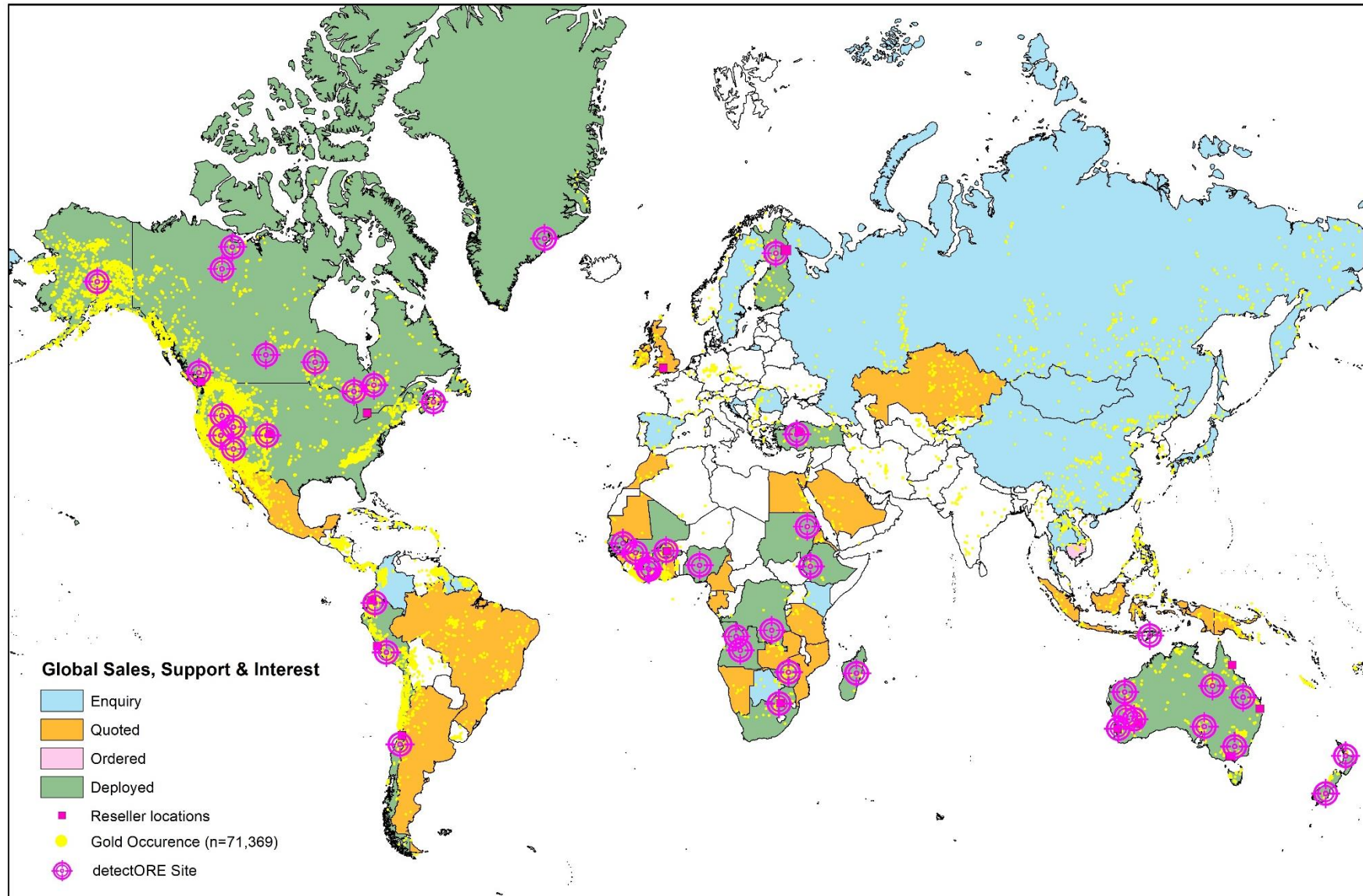


R&D, factory and warehouse.

**Canning Vale
WA 6155**



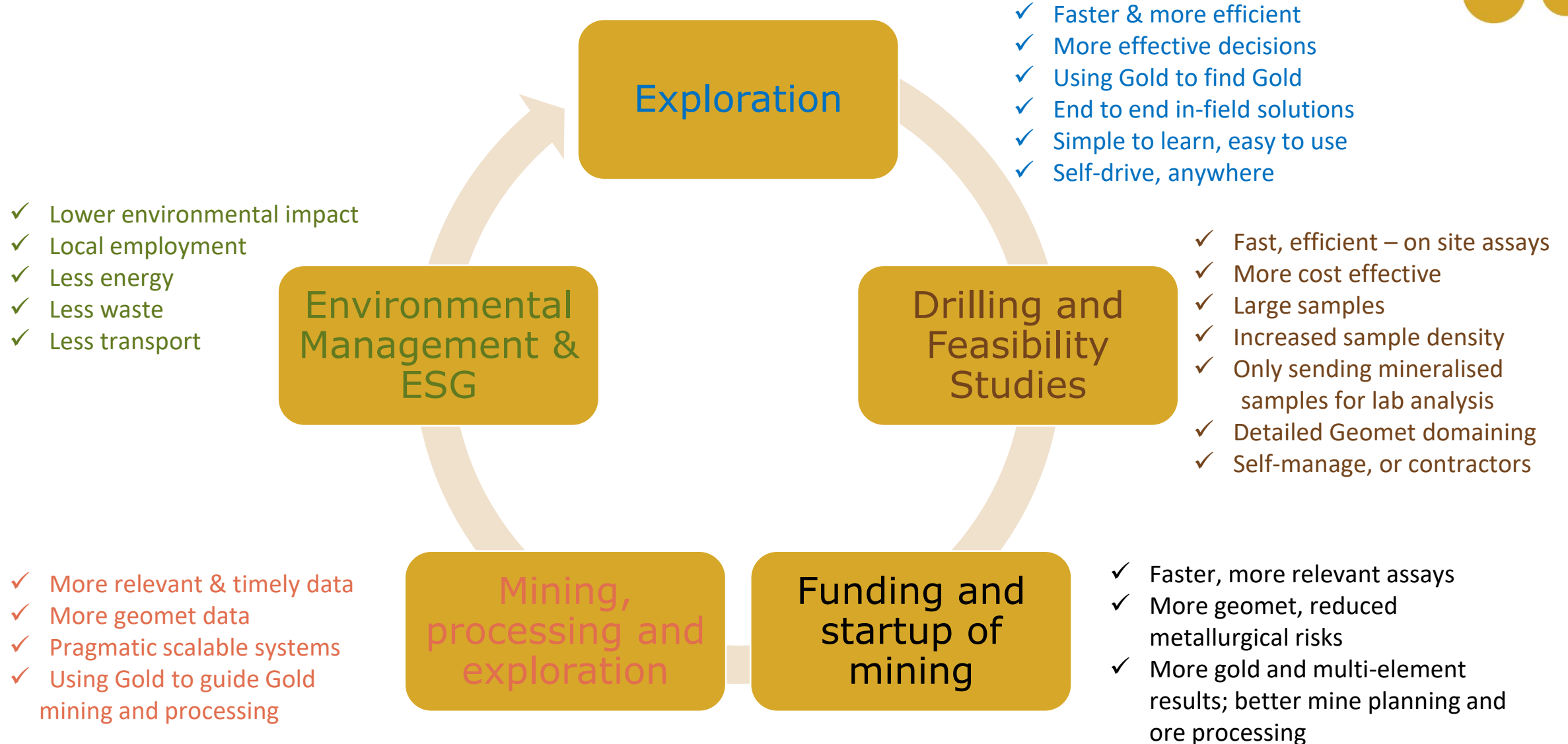
Global Market Being Opened Up – seeds sown



26 countries – exported to

51 countries – enquires, quotes, sales

Value Chains Being Optimised by Portable PPB



For more details contact...

Unit 2, 42 Tulloch Way, Canning Vale, WA 6155 Australia

T: +61 08 6248 7714

E: info@portableppb.com.au / simon.bolster@portableppb.com.au

W: www.portableppb.com



Proudly supported by:

